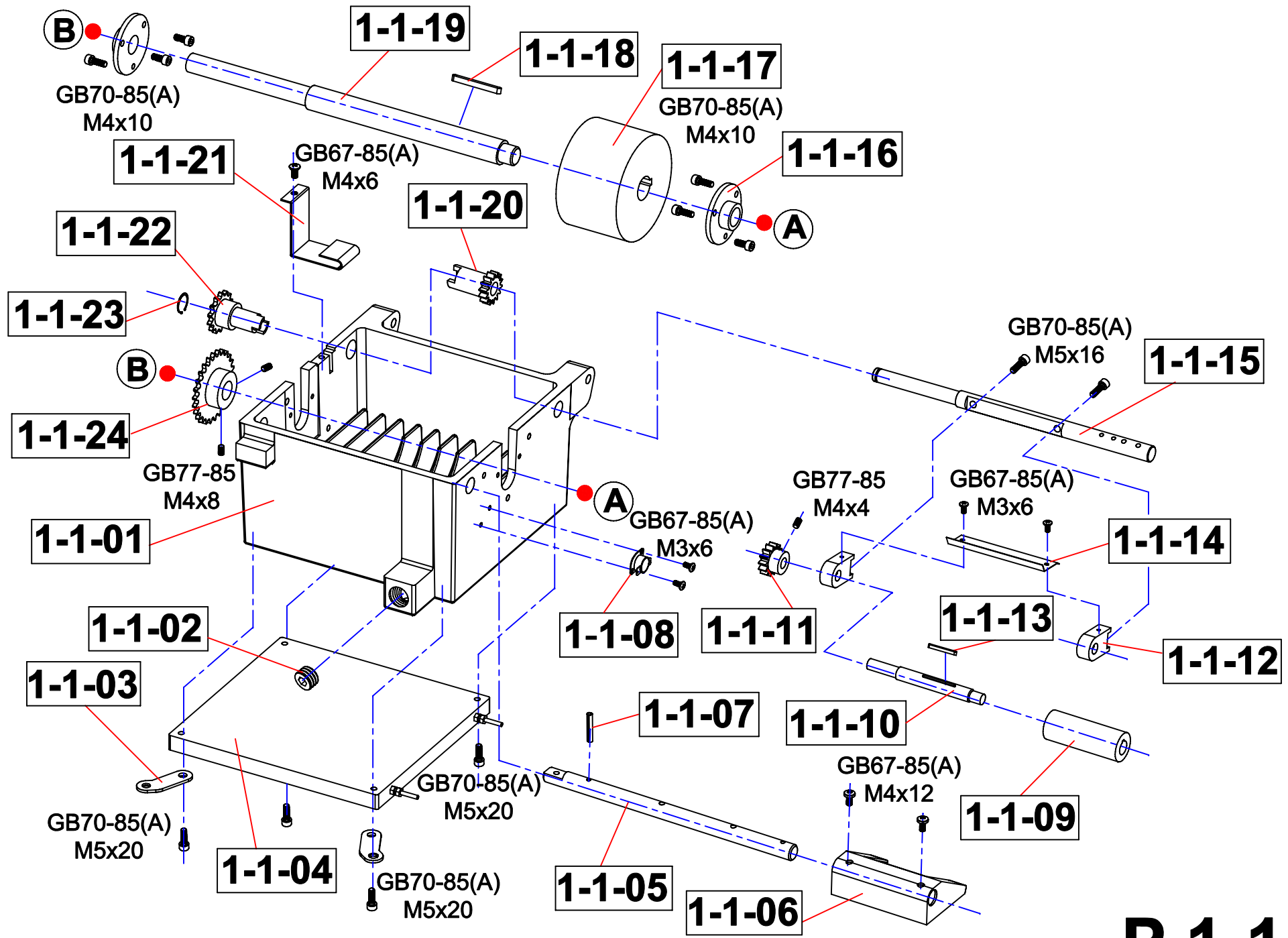


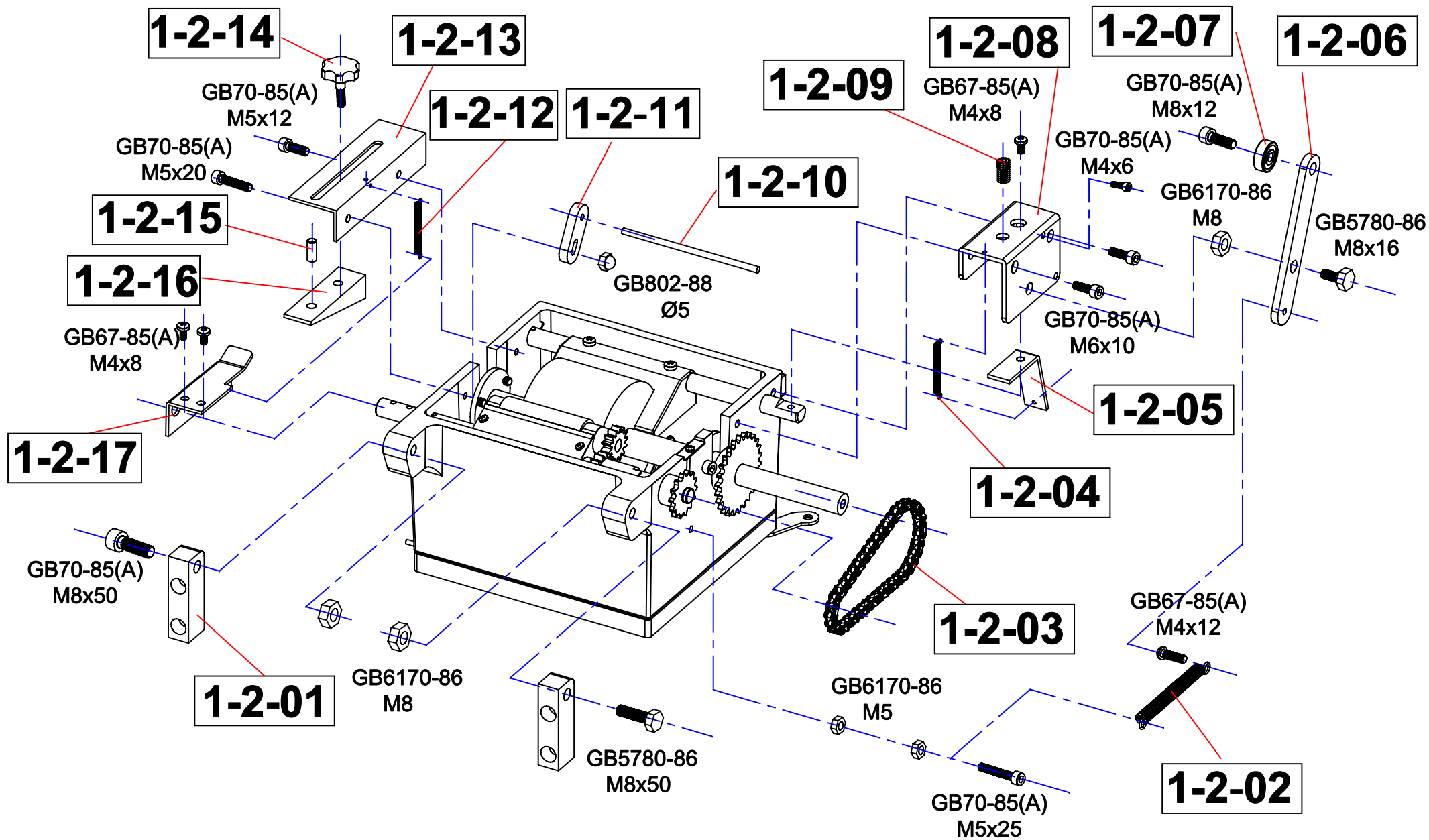
P.1-1

序號/NO.	零件號/Code#	零件名稱	Parts Name	數量/QTY
1-1-01	EP 05-4	胶锅	Melt tank	1
1-1-02		堵头	Screw	1
1-1-03		胶锅连接片	Connector	2
1-1-04	EP 06-19	胶锅底板	Heater Plate	1
1-1-05	EP 02-18	胶量轴	Shaft	1
1-1-06	EP 01-31	胶量板	Indicator	1
1-1-07		弹性销	Pin	2
1-1-08		温度开关	Snap Switch	1
1-1-09	EP 02-01	小胶轮	Scratch Drum	1
1-1-10	EP 02-0	小刮胶轴	Shaft	1
1-1-11	EP 03-4	刮胶小齿轮	Sprocket	1
1-1-12	EP 04-13	刮胶支架	Bracket	2
1-1-13		键4X4X20	Key	1
1-1-14	EP 01-30	刮胶板	Plate	1
1-1-15	EP 02-22	刮胶杆	Shaft	1
1-1-16	EP 05-5	胶锅轴套	Bushing	2
1-1-17	EP 02-13	胶轮	Drum	1
1-1-18		键5X5X40	Key	1
1-1-19	EP 02-14	胶轮轴	Shaft	1
1-1-20	EP 03-01	胶轮齿轮	Sprocket	1
1-1-21	EP 01-26	胶锅标尺	Glue Level indicator	1
1-1-22	EP 03-3	刮胶链轮	Sprocket	1
1-1-23		卡簧Φ8	Snap Spring	1
1-1-24	EP 03-2	刮胶大链轮	Sprocket	1



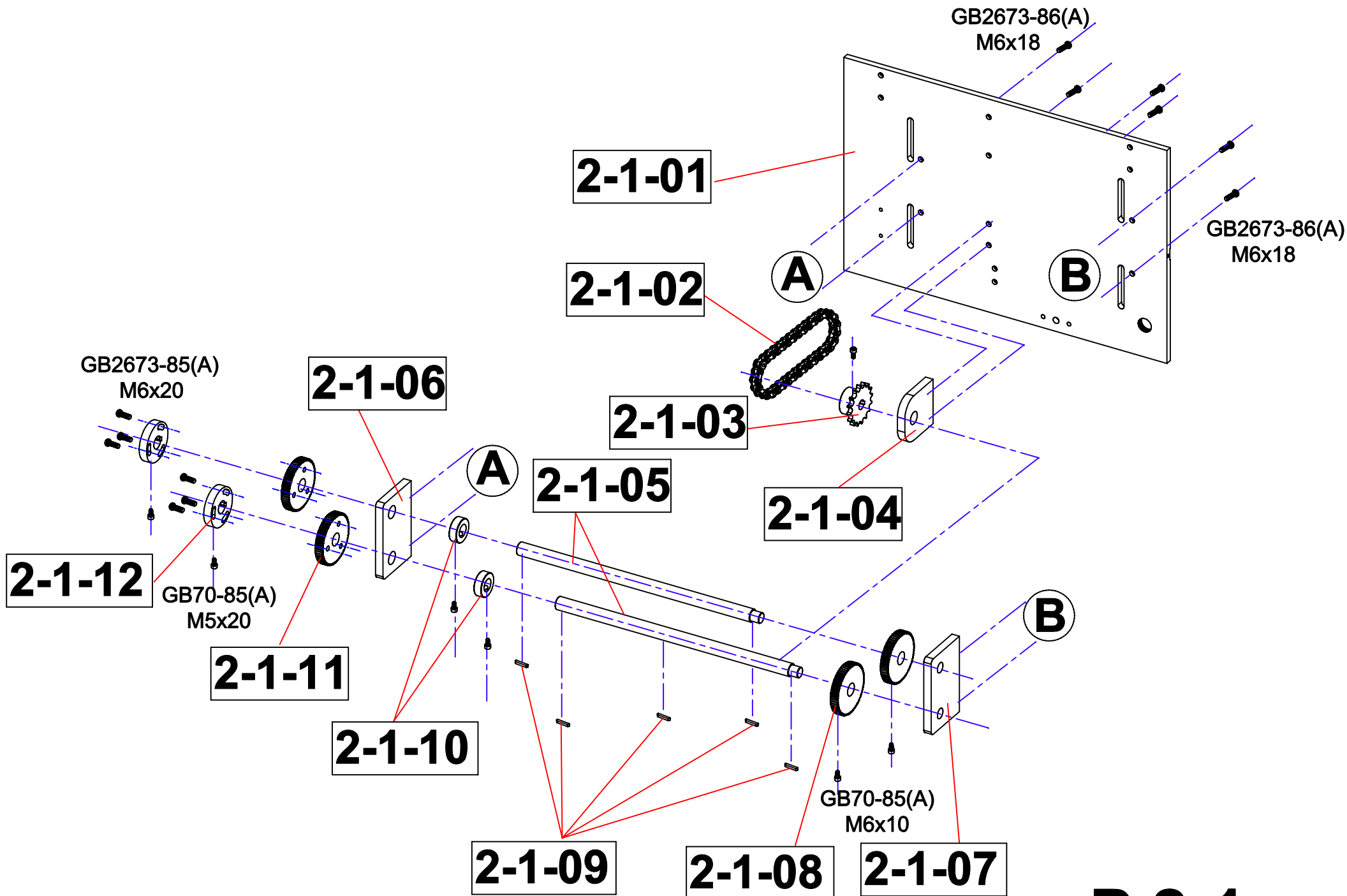
P.1-2

序號/NO.	零件號/Code#	零件名稱	Parts Name	數量/QTY
1-2-01	EP 04-21	胶锅链	Block	2
1-2-02		胶锅拉簧大	spring	2
1-2-03		胶锅链条	Chain	1
1-2-04		胶锅拉簧	Spring	1
1-2-05	EP 01-12	调胶量板	adjusting	1
1-2-06	EP 04-36	胶锅轴承板	bracket	1
1-2-07		轴承608	bearing608	1
1-2-08	EP 01-43	压锅轴承架	Bracket	1
1-2-09		注头螺丝	Bolt	1
1-2-10		不锈钢刮胶杆	Shaft	1
1-2-11	EP 04-8	调胶量板材	Block	1
1-2-12		调胶量拉簧	Spring	1
1-2-13	EP 01-11	调胶量板座	Bracket	1
1-2-14		星型把手	Knob	1
1-2-15		圆柱销	Pin	1
1-2-16	EP 04-9	定位调节块	Block	1
1-2-17	EP 01-10	调胶板	Plate	1



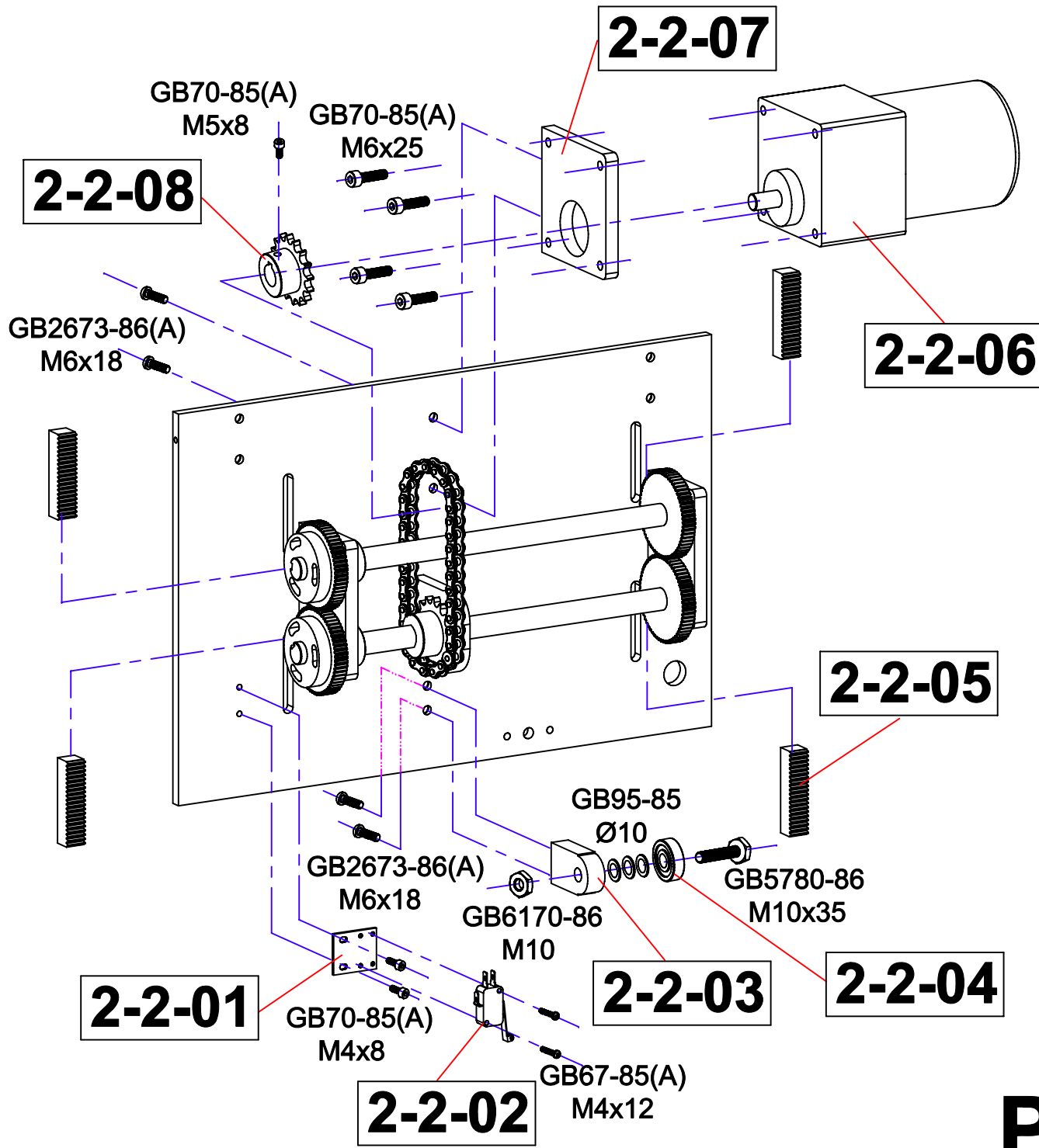
P.2-1

序號/NO.	零件號/Code#	零件名稱	Parts Name	數量/QTY
2-1-01	EP 04-01	新封面板	Plate	1
2-1-02		链条38节	Chain	1
2-1-03		传动链轮	Sprocket	1
2-1-04	EP 04-21	夹紧轴支撑板	Support	1
2-1-05	EP 02-9	新夹紧轴A	Shaft	2
2-1-06	EP 04-35	新夹紧齿轮大孔板	Plate	1
2-1-07	EP 04-19	夹紧齿轮小孔板	Plate	1
2-1-08	EP 03-13	大齿轮	Gear	2
2-1-09		键5X10	Key	5
2-1-10	EP 02-10	夹紧轴档	Spacer	2
2-1-11	EP 03-12	新大齿轮	Gear	2
2-1-12	EP 03-16	齿轮调节座	Collar	2



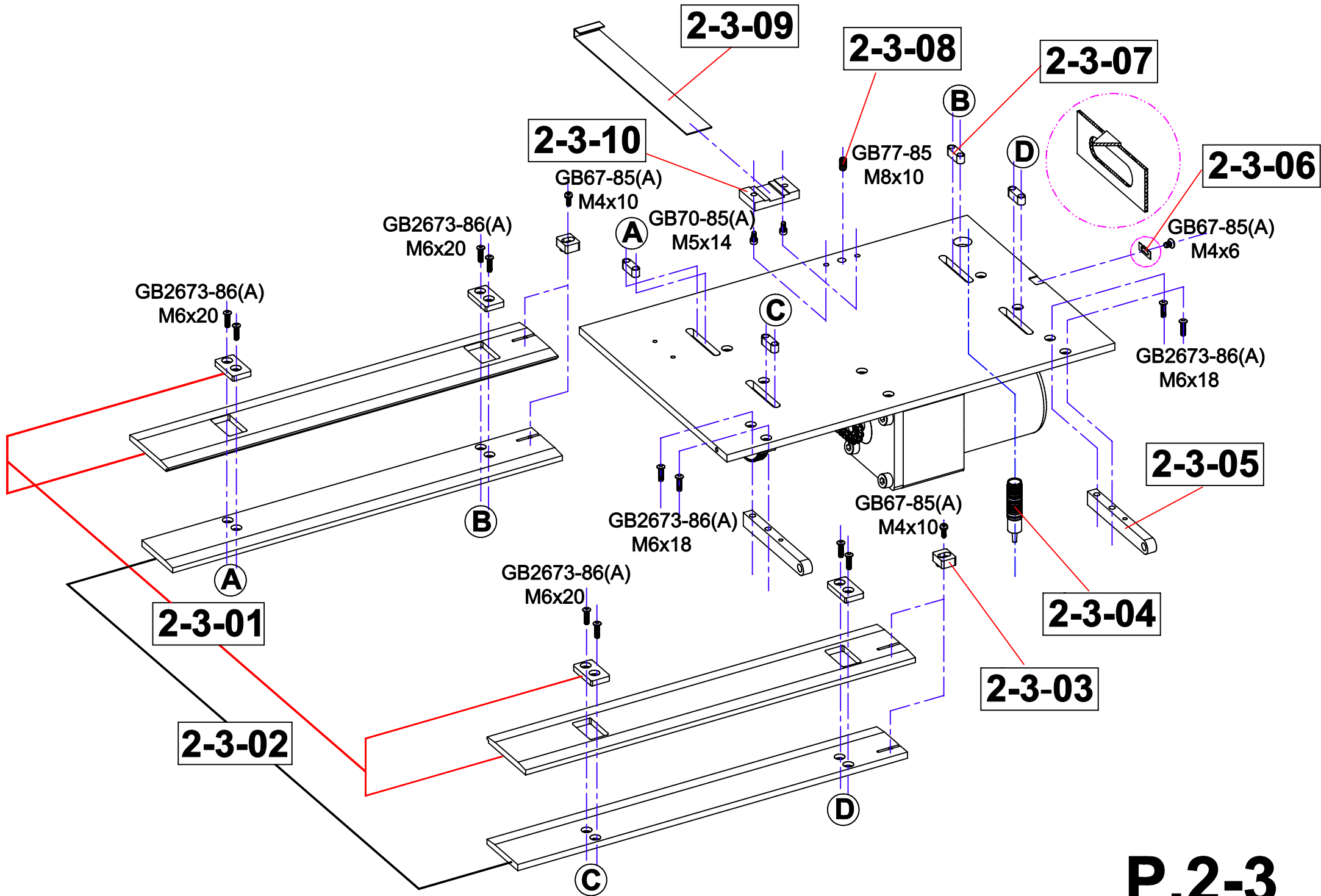
P.2-2

序號/NO.	零件號/Code#	零件名稱	Parts Name	數量/QTY
2-2-01	EP 01-4	行程开关架	Bracket	1
2-2-02		行程开关	Switch	1
2-2-03	EP 04-32	升降轴承座	Block	1
2-2-04		轴承6200	Bearing6200	1
2-2-05	EP 03-15	齿条	Gear	1
2-2-06		40W电机	Motor 40W	1
2-2-07	EP 04-7	电机支撑板	Plate	1
2-2-08		电机传动链轮	Gear	1



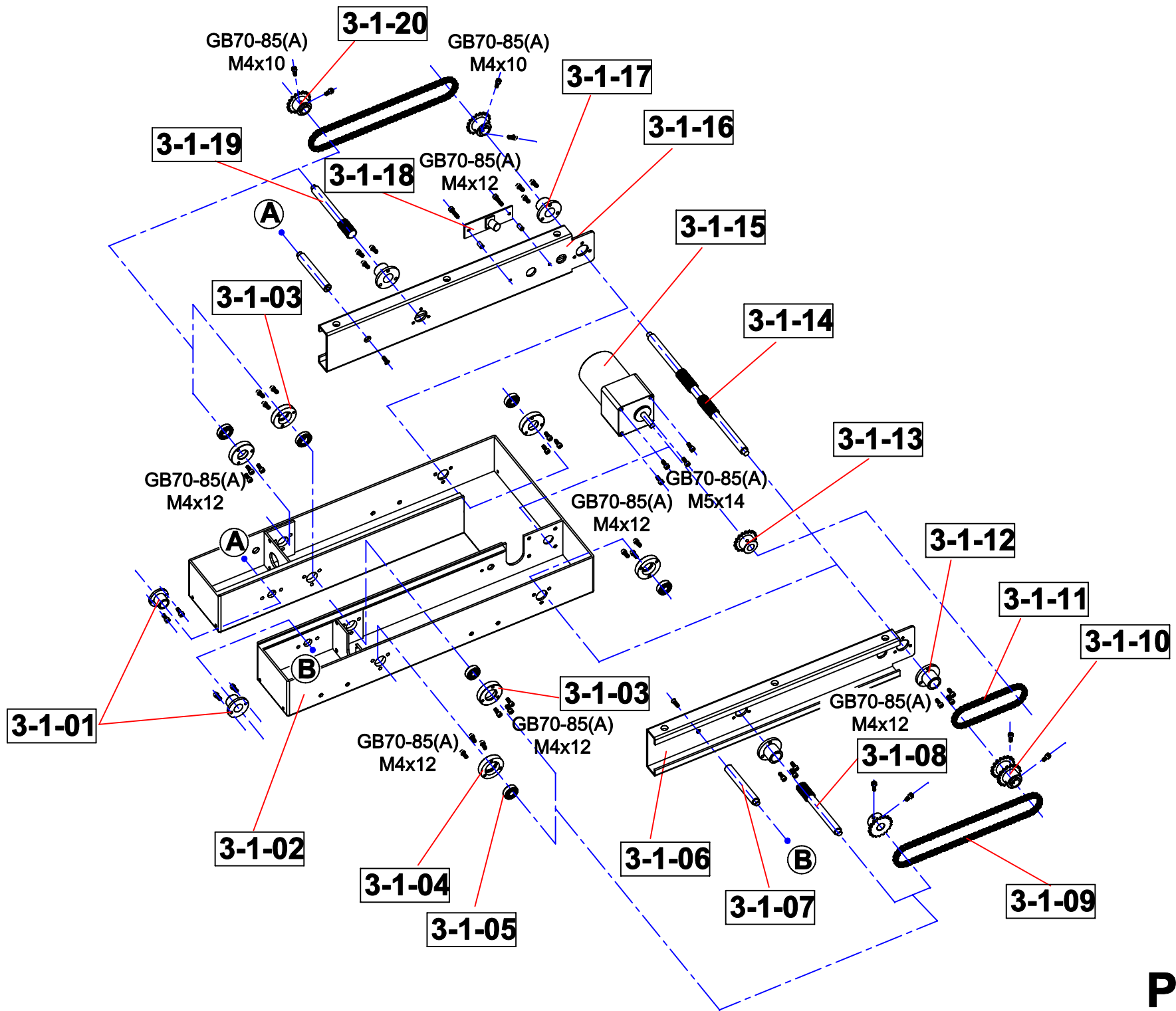
P.2-3

序號/NO.	零件號/Code#	零件名稱	Parts Name	數量/QTY
2-3-01	EP 04-18	硬软封面夹紧板	Clamping Bar	2
2-3-02	EP 01-21	左右夹紧板	Clamping Bar	2
2-3-03	EP 05-1	定位块	Stopper	2
2-3-04		台板光电	Photoelectric Sensor	1
2-3-05	EP 04-24	铰链上	Bracket	2
2-3-06		封面边夹板	Plate	1
2-3-07	EP 04-5	齿条衬套	Housing	4
2-3-08		注头螺丝M8X10	Screw	1
2-3-09	EP 06-10	标尺	Gauge	1
2-3-10	EP 04-4	标尺架	Gauge Support	1



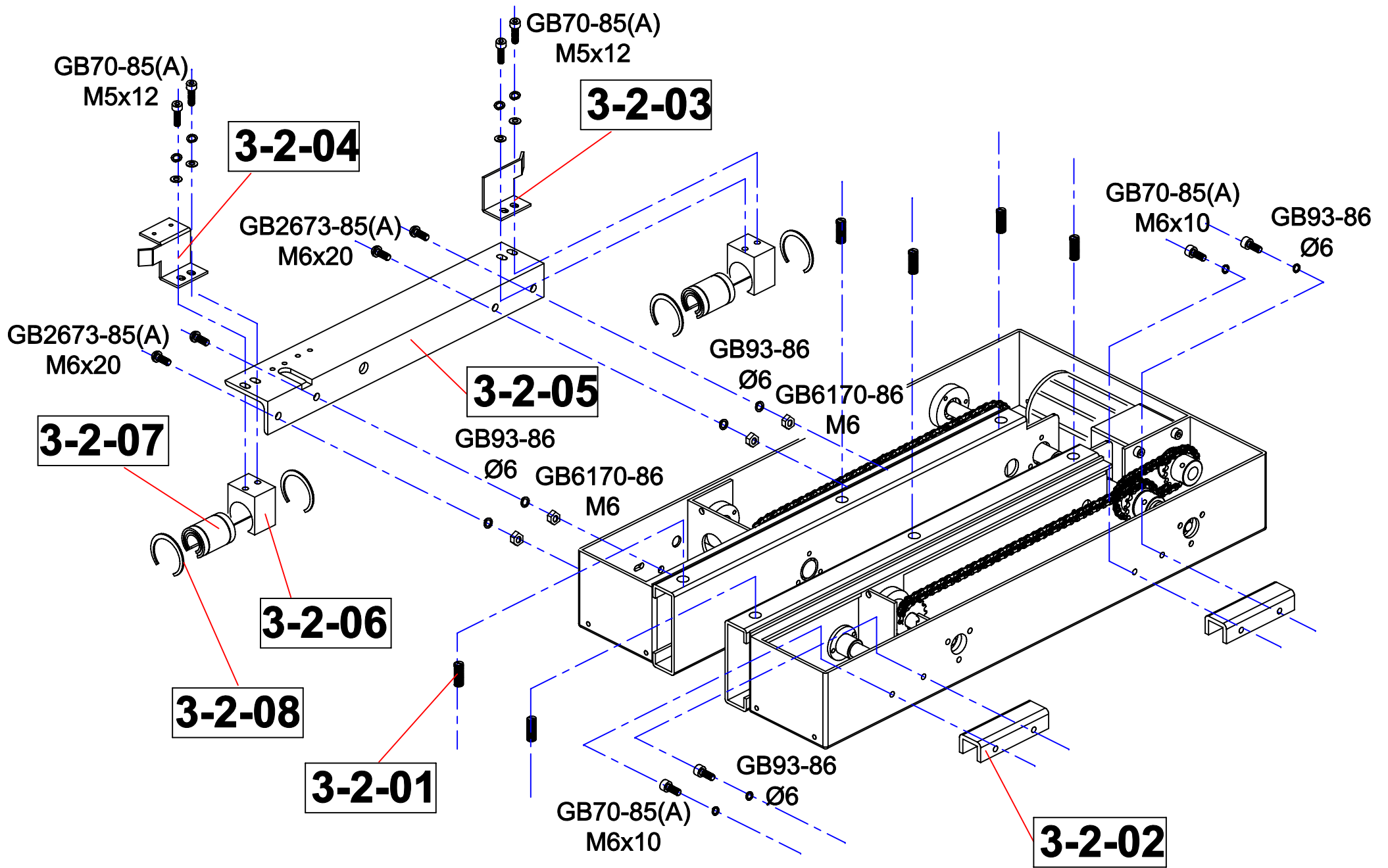
P.3-1

序號/NO.	零件號/Code#	零件名稱	Parts Name	數量/QTY
3-1-01	EP 05-02	导套	Nut	2
3-1-02	EP 01-24	夹纸底板	Clamper Base	1
3-1-03		夹纸板架	support	2
3-1-04	EP 02-12	丝杆座	support	4
3-1-05		轴承608	bearing	6
3-1-06	EP 01-22	左夹纸板	Clamper Plate	1
3-1-07	EP 02-21	导柱	Shaft	2
3-1-08	EP 02-2	短丝杆(左)	Shaft	1
3-1-09		链条104节	chain	2
3-1-10	EP 03-14	双排链轮	Sprocket	1
3-1-11		链条38节	Chain	1
3-1-12	EP 05-3	夹板活另(左)	Shaft	2
3-1-13		电机链轮	Sprocket	1
3-1-14	EP 02-1	长丝杆	Shaft	1
3-1-15		电机15W	Motor 15W	1
3-1-16	EP 01-22	右夹纸板	Plate	1
3-1-17	EP 05-3	夹板活另(右)	Housing	2
3-1-18		夹紧到位开关	Clamper Switch	1
3-1-19	EP 02-2	短丝杆(右)	Shaft	1
3-1-20	EP 03-5	夹紧链轮	Gear	3



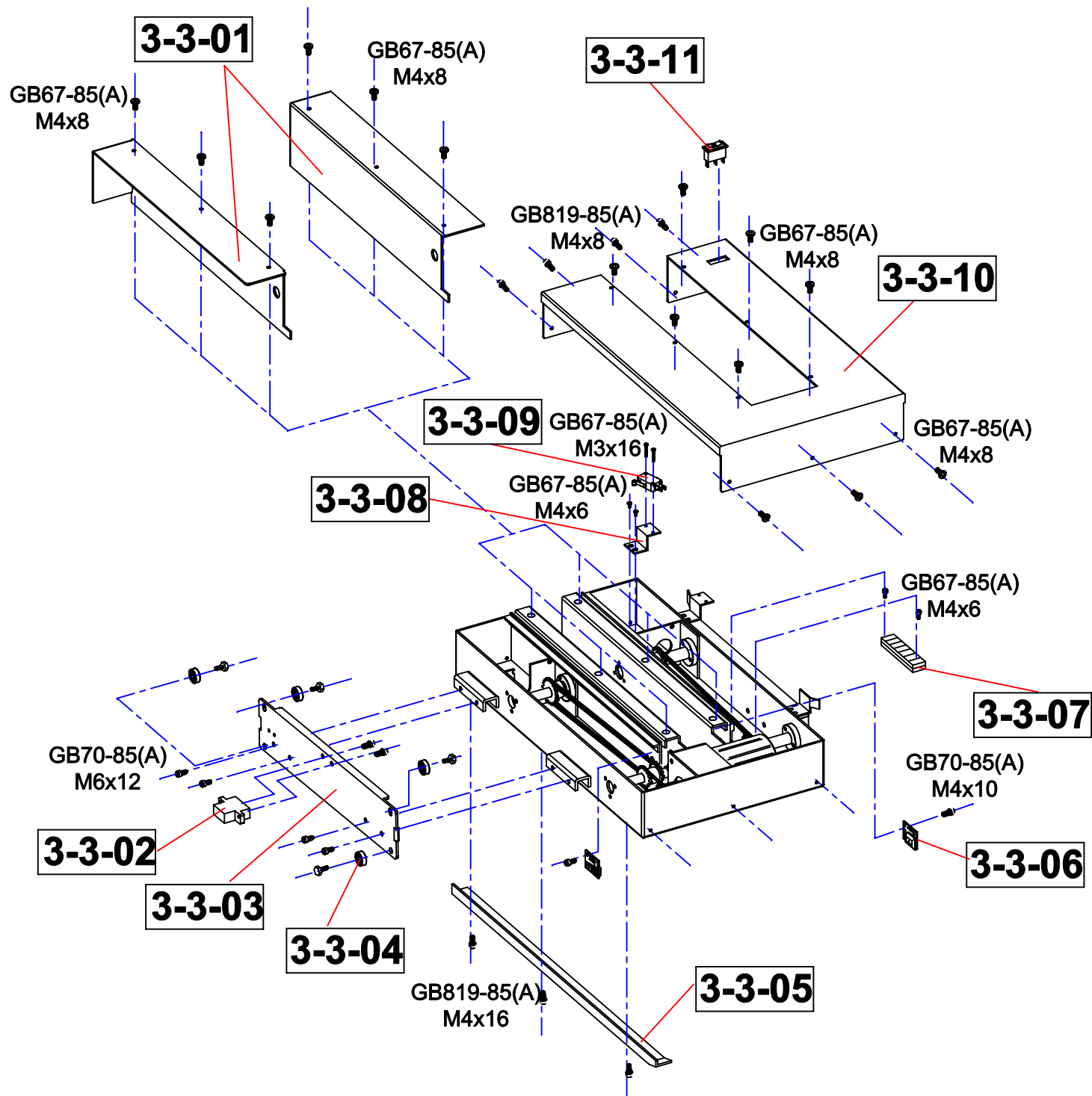
P.3-2

序號/NO.	零件號/Code#	零件名稱	Parts Name	數量/QTY
3-2-01		夾緊板調節螺絲	Screw	6
3-2-02	EP 01-48	軌道支架塊	Holder	2
3-2-03	EP 01-9	電線支撐板1	Bracket	1
3-2-04	EP 01-9	電線支撐板	Bracket	1
3-2-05	EP 01-16	軌道支撐板	Plate	1
3-2-06	EP 04-37	直線軸承座	Block	2
3-2-07		直線軸承	Bearing	2
3-2-08		卡簧Φ32	Snap Spring	4



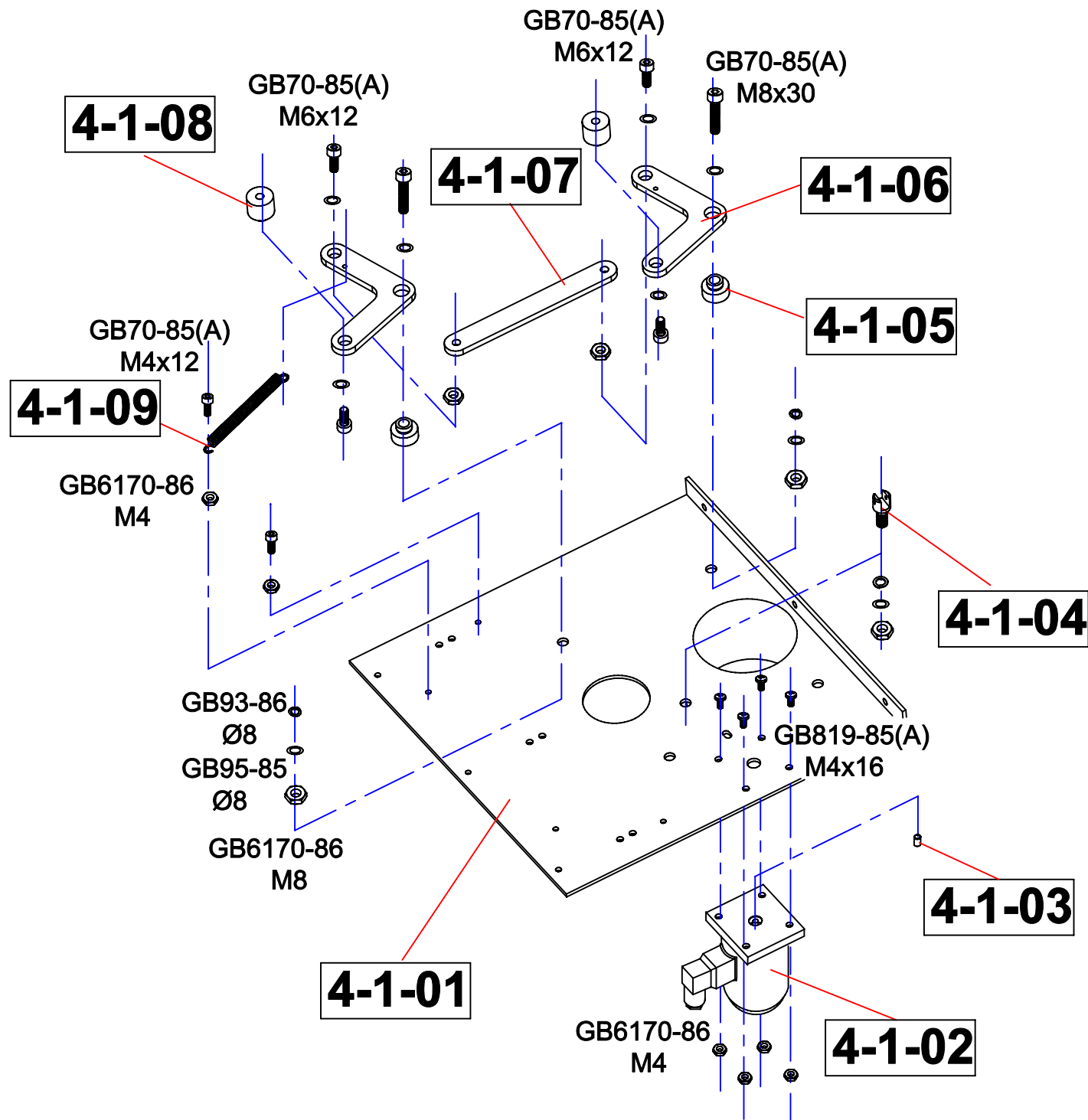
P.3-3

序號/NO.	零件號/Code#	零件名稱	Parts Name	數量/QTY
3-3-01	EP 01-21	夾緊左右板	Clamper plate	2
3-3-02	EP 04-29	鏈條座	Block	1
3-3-03	EP 01-15	軌道架	Plate	1
3-3-04		軸承608	Bearing	4
3-3-05	EP 01-42	壓鍋板	Plate	1
3-3-06		夾紙光電	Photocell sensor	2
3-3-07		十孔接線柱	Terminal Board	1
3-3-08	EP 01-4	行程開關架	Bracket	1
3-3-09	EP 06-28	行程開關	Switch	1
3-3-10	EP 01-25	夾紙罩	Cover	1
3-3-11		雙復位開關	Switch	1



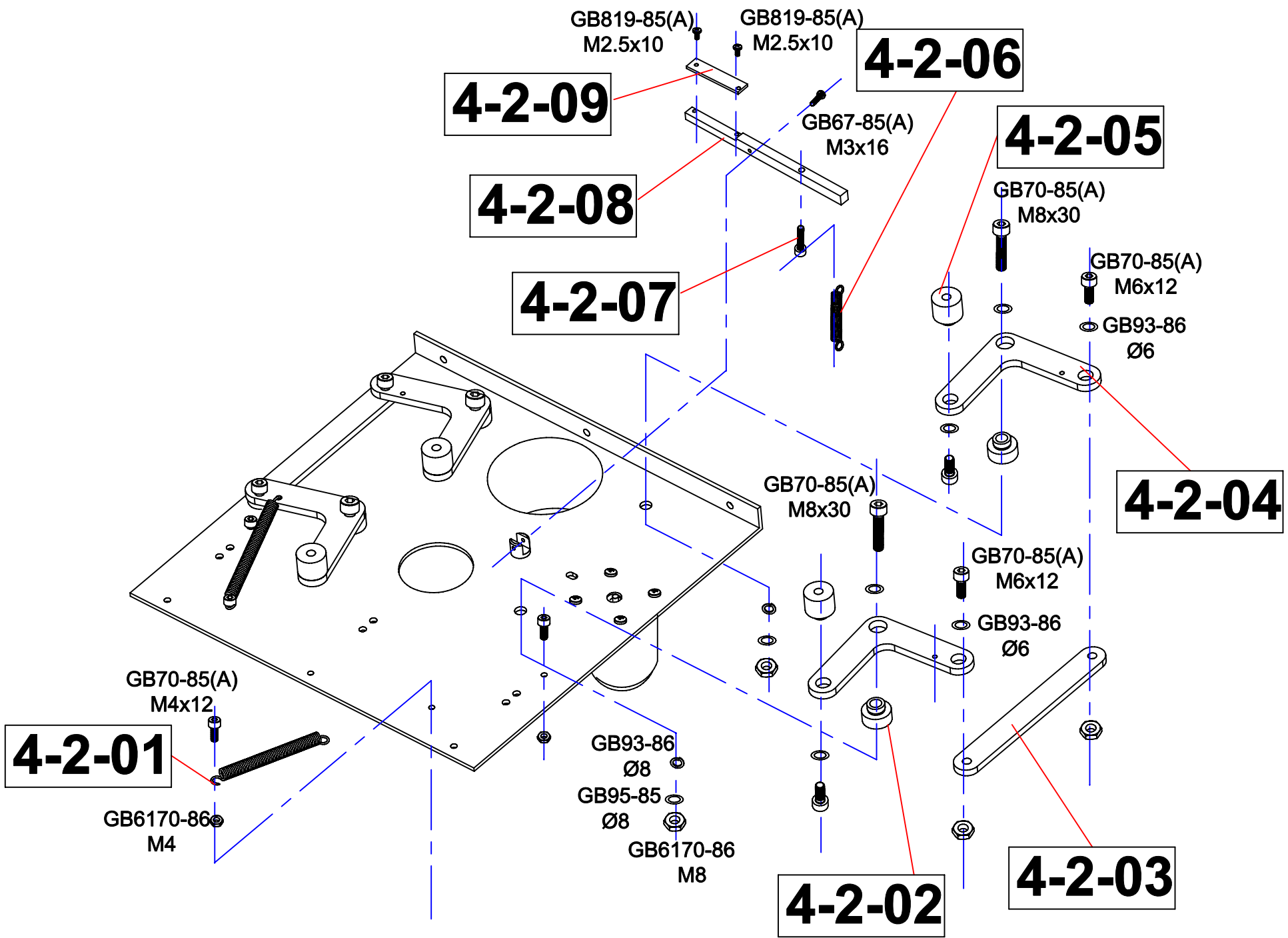
P.4-1

序號/NO.	零件號/Code#	零件名稱	Parts Name	數量/QTY
4-1-01	EP 01-41	铣刀中板	Plate	1
4-1-02		电磁阀	Valve	1
4-1-03		电磁阀垫头	Pin	1
4-1-04	EP 02-17	刹车座	Housing	1
4-1-05	EP 02-8	盖板轴座	Bushing	2
4-1-06	EP 04-12	盖板架	Lever	2
4-1-07	EP 04-30	平行条	Plate	1
4-1-08	EP 02-7	盖板架座	Spacer	2
4-1-09		铣刀拉簧Φ1.2X10X60	Spring	1



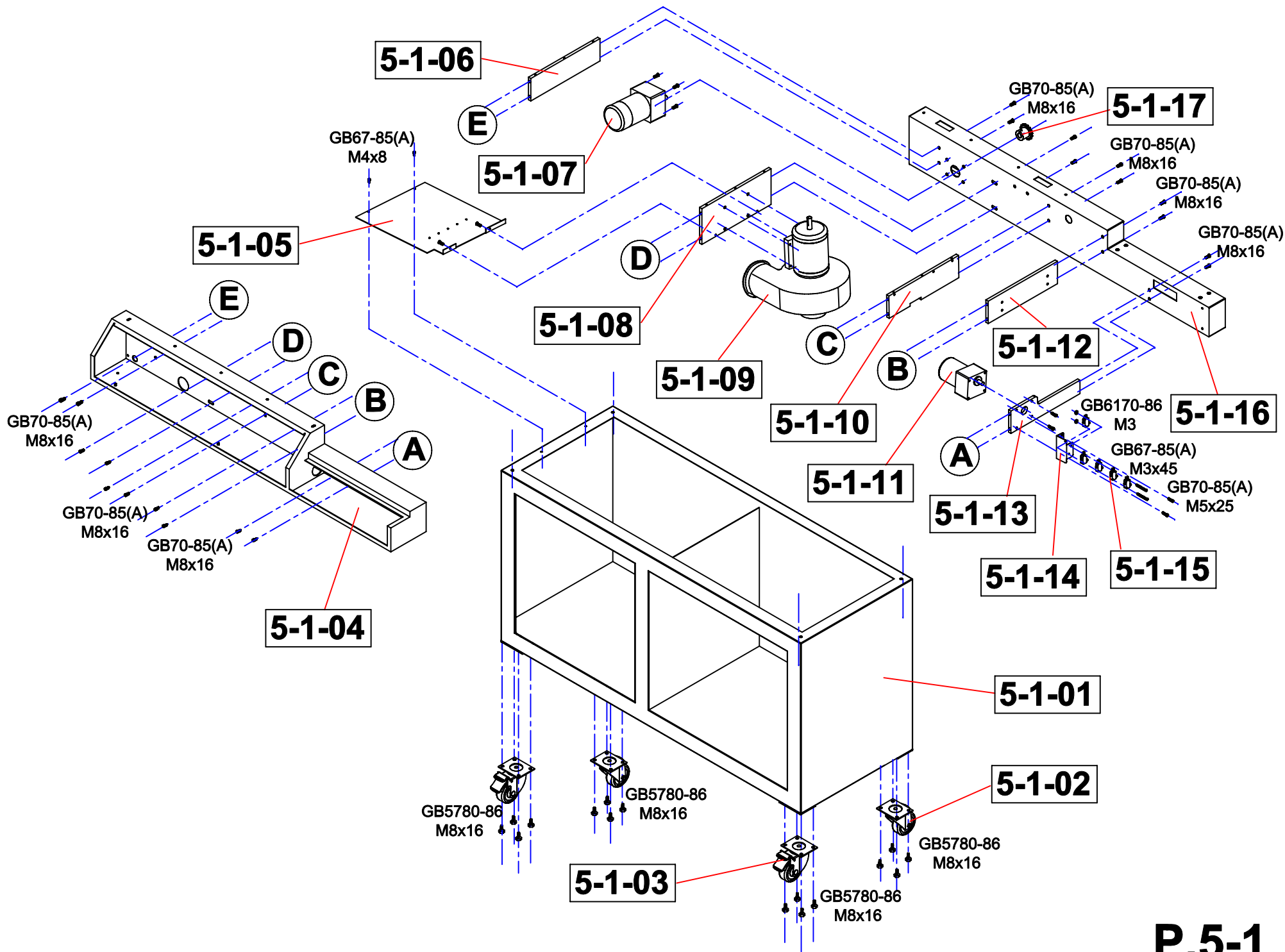
P.4-2

序號/NO.	零件號/Code#	零件名稱	Parts Name	數量/QTY
4-2-01		铣刀拉簧Φ1.2X10X60	Spring	1
4-2-02	EP 02-8	盖板轴座	Housing	2
4-2-03	EP 04-30	平行条	Plate	1
4-2-04	EP 04-12	盖板架	Spring	2
4-2-05	EP 02-8	盖板架座	Plate	2
4-2-06		铣刀拉簧Φ1X8X35	Spring	1
4-2-07		刹车拉簧螺丝	Screw	1
4-2-08	EP 04-31	刹车条	Lever	1
4-2-09		刹车皮	Rubber	1



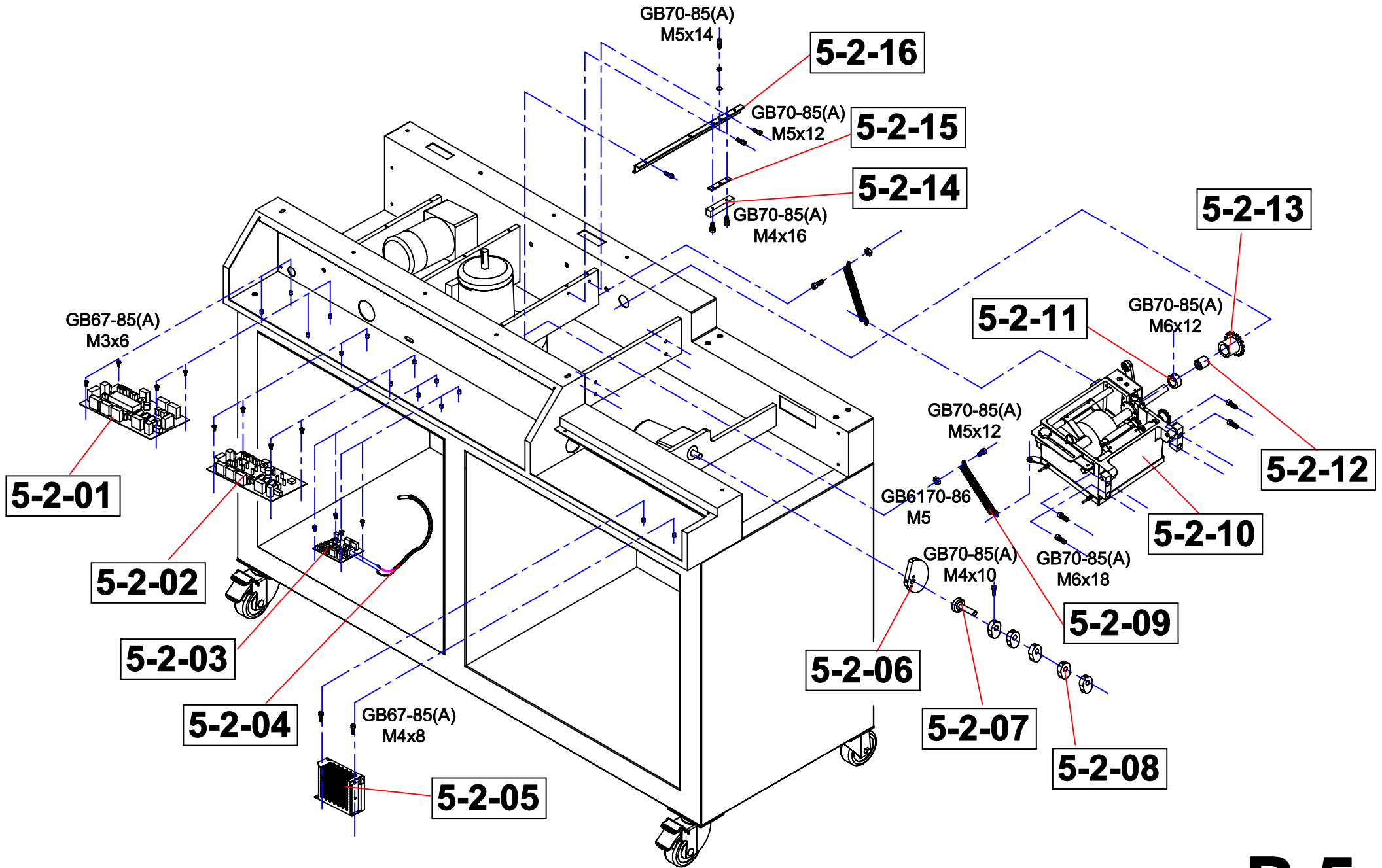
P.5-1

序號/NO.	零件號/Code#	零件名稱	Parts Name	數量/QTY
5-1-01	EP 01-6	底座	Table frame	1
5-1-02		万向轮	Caster	2
5-1-03		刹車万向輪	Caster	2
5-1-04	EP 01-33	前边	Fornt cover	1
5-1-05	EP 01-36	托板	Plate	1
5-1-06	EP 04-2	60W旁板	Side cover	1
5-1-07	EP 06-4	电机60W	Motor 60W	1
5-1-08	EP 04-10	风机旁板	Fan Cover	1
5-1-09		风机	Fan	1
5-1-10	EP 04-38	中旁板	Middle Cover	1
5-1-11		30W电机	Motor	1
5-1-12	EP 04-22	胶锅旁板	Cover	1
5-1-13	EP 04-33	凸轮旁板	Cover	1
5-1-14		开关座	Bracket	1
5-1-15	EP 06-28	行程开关	Switch	5
5-1-16	EP 01-17	后边	Rear Cover	1
5-1-17	EP 03-9	60W电机链轮	Gear	1



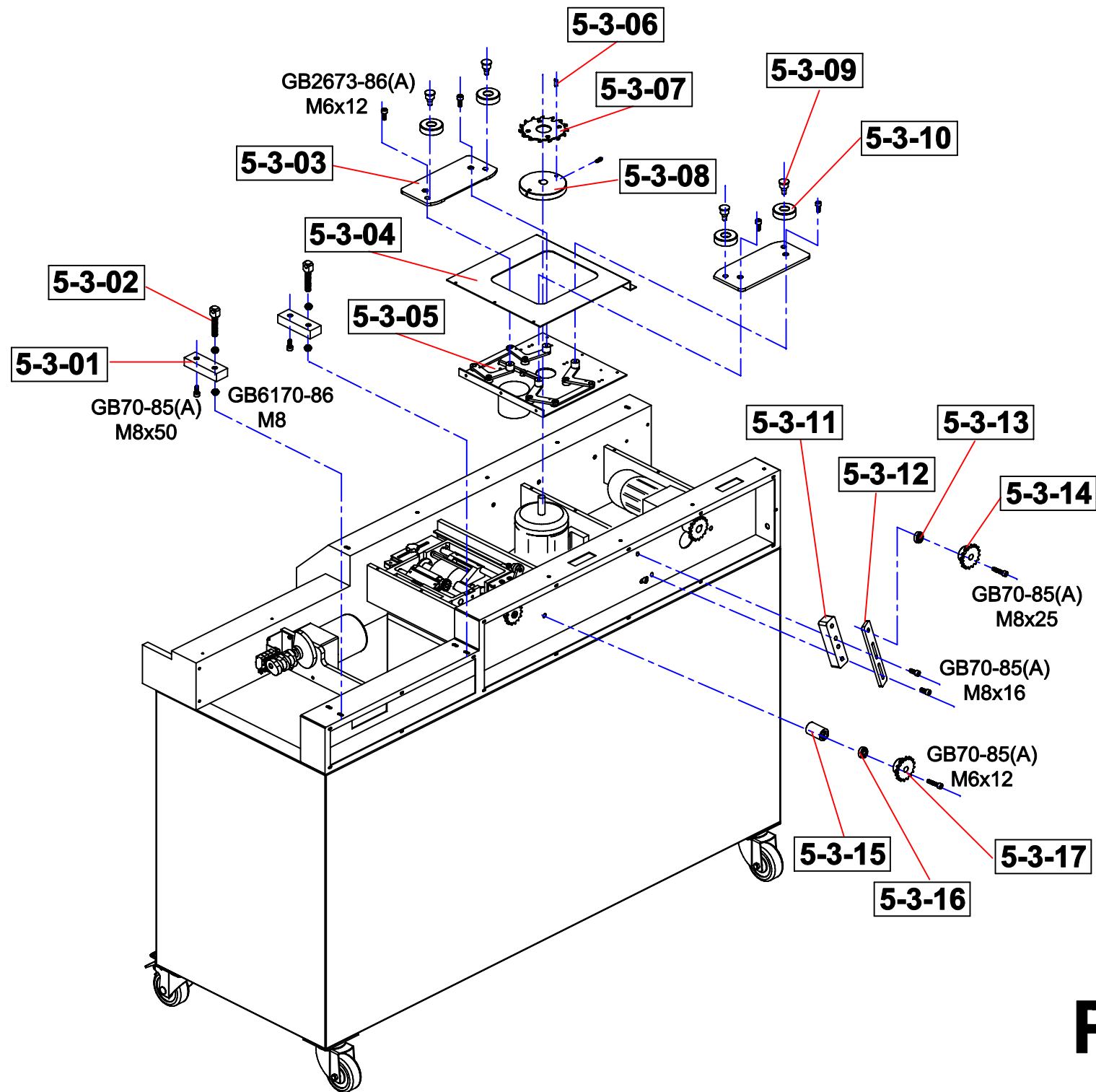
P.5-2

序號/NO.	零件號/Code#	零件名稱	Parts Name	數量/QTY
5-2-01	HL SRB	輸入线路板	PCB	1
5-2-02	HL SCB	输出线路板	PCB	1
5-2-03	HL WKB	温控线路板	Temp PCB	1
5-2-04		温控探头	Temp Sensor	2
5-2-05	HL KGDY	开关电源	Power PCB	1
5-2-06	EP 04-6	大凸轮	Cam	1
5-2-07	EP 02-21	小凸轮轴	Cam	1
5-2-08	EP 05-6	小凸轮	Cam	5
5-2-09		胶锅拉簧	Spring	2
5-2-10		胶锅部件	Melt tank	1
5-2-11	EP 02-10	夹紧轴挡	Spacer	1
5-2-12		单向轴承	Bearing	1
5-2-13		胶锅飞轮	Sprocket	1
5-2-14		硅橡胶	Nut	1
5-2-15	EP 01-29	胶锅压板	Nut plate	1
5-2-16	EP 01-27	胶锅衬挡	Nut plate	1



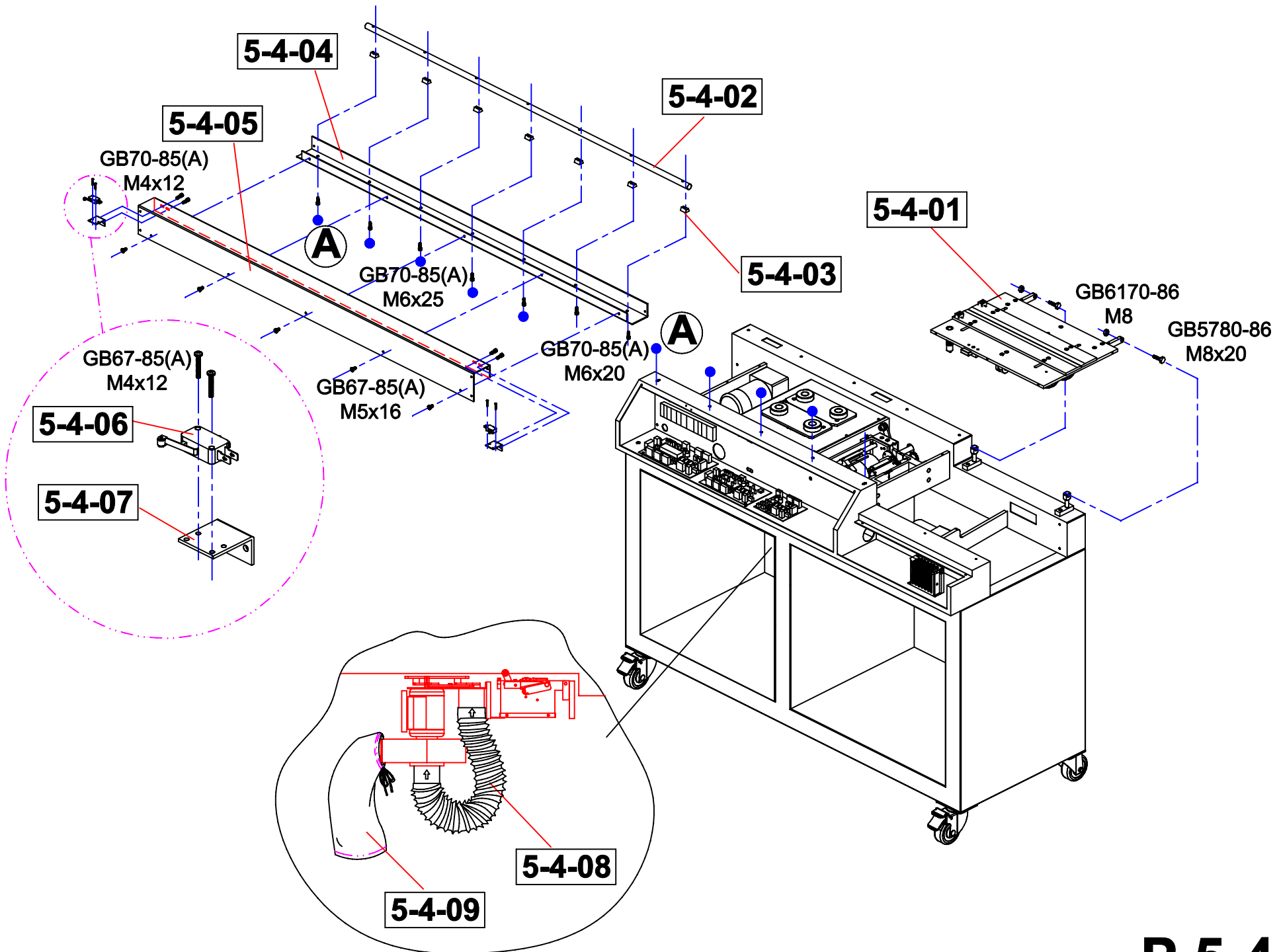
P.5-3

序號/NO.	零件號/Code#	零件名稱	Parts Name	數量/QTY
5-3-01	EP 04-26	铰链下垫	Nut Plate	2
5-3-02	EP 02-15	铰链下	Bolt	2
5-3-03	EP 04-34	铣刀面板	Cover	2
5-3-04	EP 01-45	右中盖	Cover	1
5-3-05		铣刀部件	Cutter Device	1
5-3-06		铣刀	Notching Cutter	1
5-3-07		大铣刀	Milling Cutter	1
5-3-08	EP 02-5	铣刀座	Support	1
5-3-09	EP 02-19	铣刀导轮轴	Bolt	4
5-3-10	EP 06-24	铣刀导轮	Spacer	4
5-3-11	EP 04-23	紧链垫	Washer	1
5-3-12	EP 04-25	紧链板	Nut Plate	1
5-3-13		轴承608	Bearing	1
5-3-14	EP 03-8	链轮	Sprocket	1
5-3-15	EP 02-16	链轮垫头(长)	Washer	1
5-3-16		轴承608	Bearing	1
5-3-17	EP 03-8	链轮	Sprocket	1



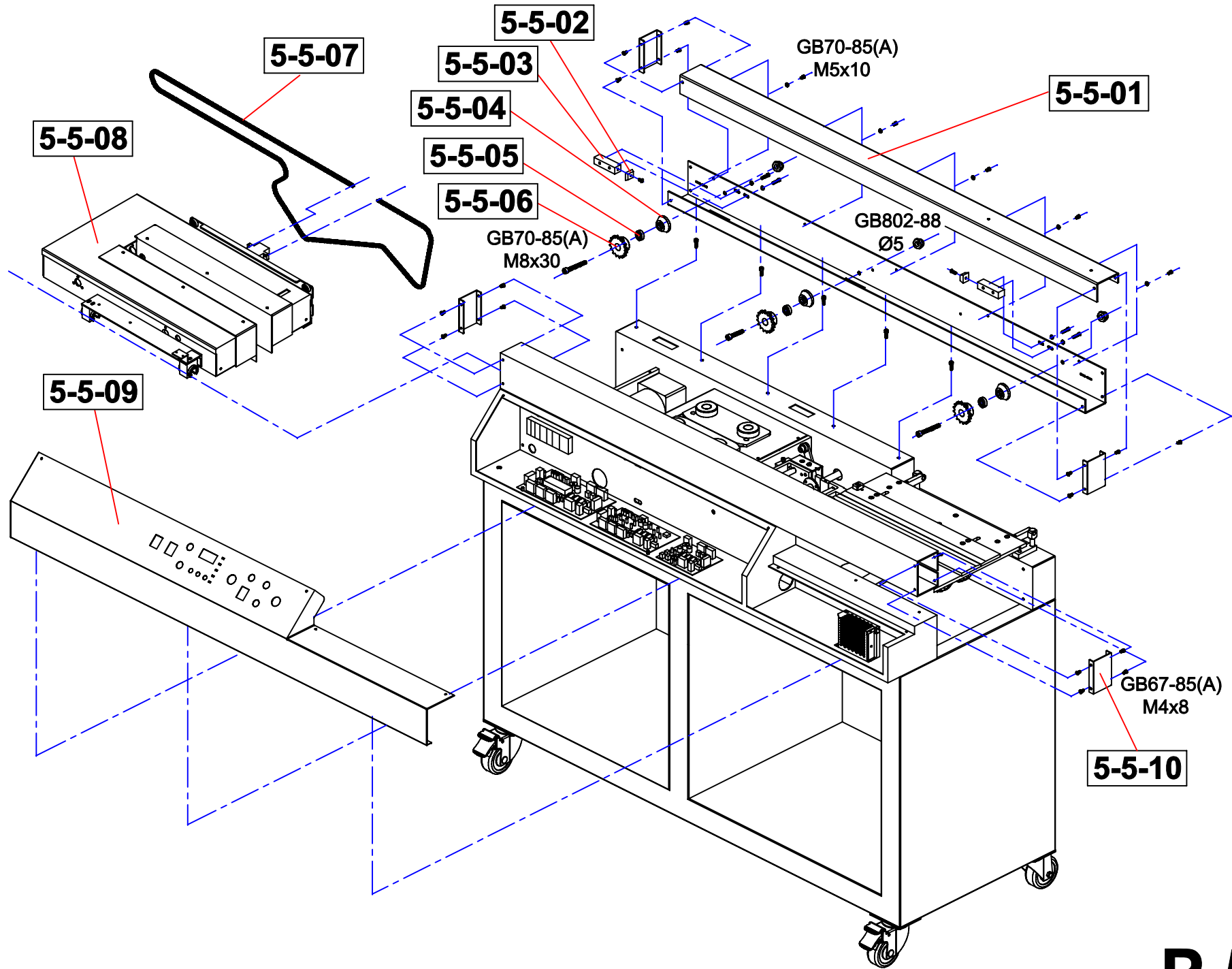
P.5-4

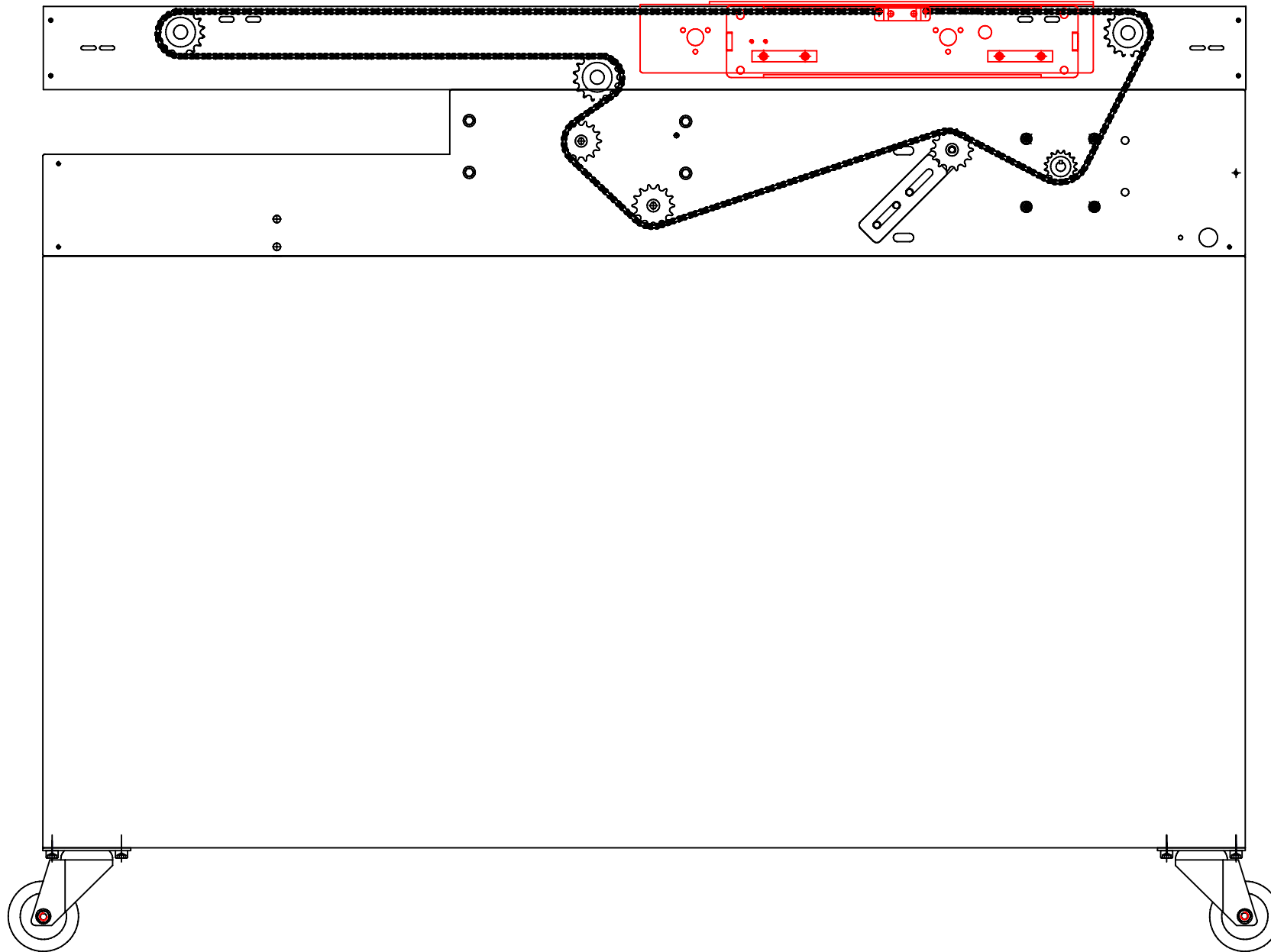
序號/NO.	零件號/Code#	零件名稱	Parts Name	數量/QTY
5-4-01		台板部件	Nipper Device	1
5-4-02	EP 06-16	轨道轴	Shaft	1
5-4-03	EP 04-14	轨道支撑座	Bracket	7
5-4-04	EP 01-0	前道轨(下)	Rack	1
5-4-05	EP 01-0	前道轨(上)	Rack	1
5-4-06		长脚行程开关	Switch	2
5-4-07	EP 01-3-A	道轨行程开关架	Bracket	2
5-4-08		风管	Hose	1
5-4-09		集尘布袋	Bag	1



P.5-5

序號/NO.	零件號/Code#	零件名稱	Parts Name	數量/QTY
5-5-01	EP 01-0	后道轨上	Rack	1
5-5-02		硅橡胶	Rubber	2
5-5-03	EP 04-39	撞头	Block	2
5-5-04	EP 02-16	链轮垫头	Spacer	3
5-5-05		轴承608	Bearing	3
5-5-06	EP 03-8	链轮	Sprocket	3
5-5-07		链条294节	Chain	1
5-5-08		小车部件	Clamper Device	1
5-5-09	EP 01-8	电器面板	Front Cover	1
5-5-10	EP 01-5	道轨盖	Cover	4

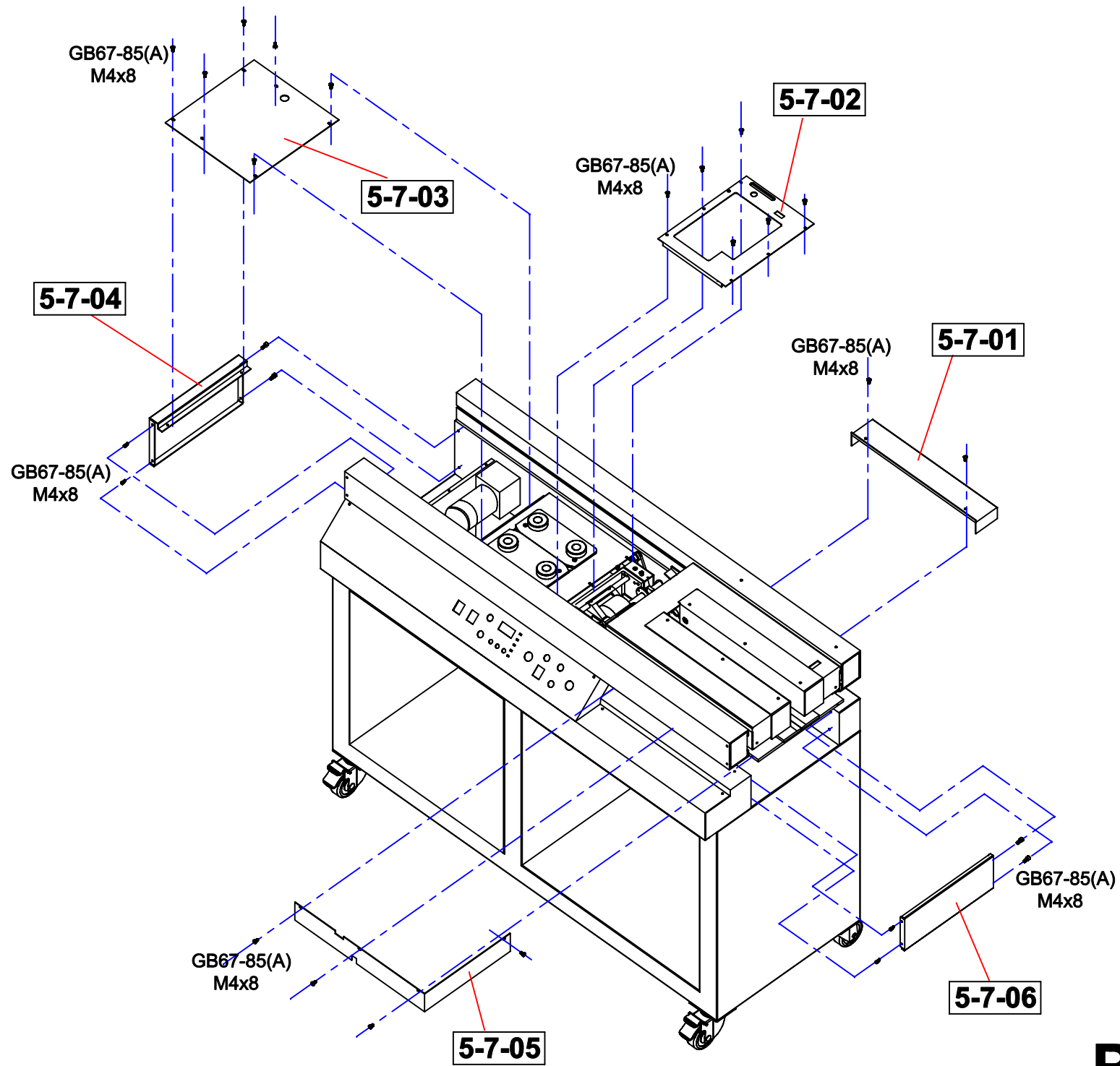




P.5-6

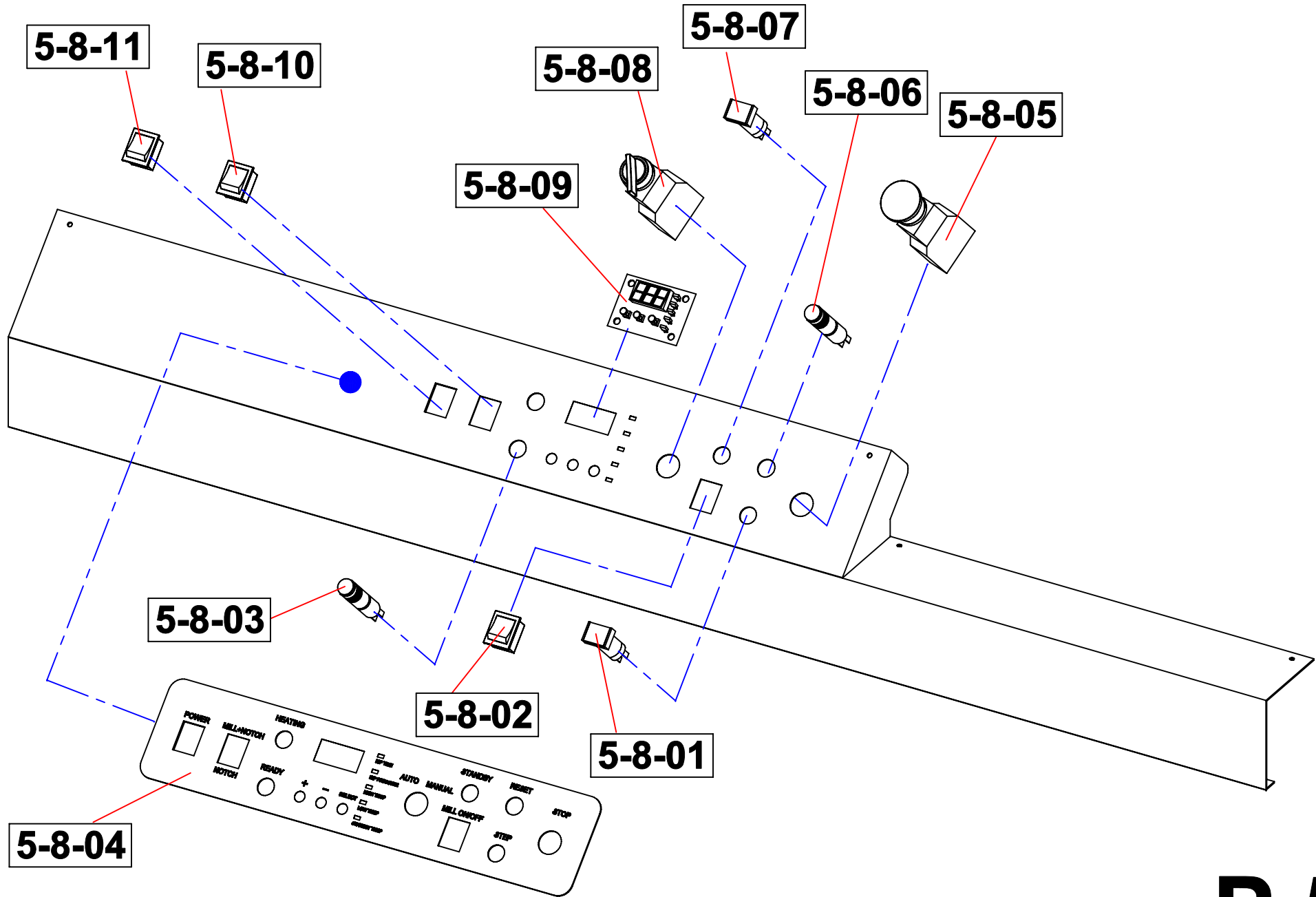
P.5-7

序號/NO.	零件號/Code#	零件名稱	Parts Name	數量/QTY
5-7-01	EP 01-39	托纸板后板	Cover	1
5-7-02	EP 01-28	胶锅面板	Cover	1
5-7-03	EP 01-2	60W电机面板	Cover	1
5-7-04	EP 01-46	左旁盖	Cover	1
5-7-05	EP 01-38	托纸板边板	Cover	1
5-7-06	EP 01-44	右旁盖	Cover	1



P.5-8

序號/NO.	零件號/Code#	零件名稱	Parts Name	數量/QTY
5-8-01		点动开关	Button	1
5-8-02		绿色船型开关	Switch	1
5-8-03		红色指示灯	Indicator	1
5-8-04	EP 06-2	控制面贴	Control Panel	1
5-8-05		急停开关	Stop Button	1
5-8-06		复位开关	Reset Button	1
5-8-07		保温开关	Standby Button	1
5-8-08		手动/自动开关	Switch	1
5-8-09	HL XSB	显示板	LCD	1
5-8-10		不带灯船型开关	Switch	1
5-8-11		红色船型开关	Switch	1



P.5-8

P.5-9

序號/NO.	零件號/Code#	零件名稱	Parts Name	數量/QTY
5-9-01	EP 01-37	托盘	Plate	1
5-9-02		拉手	Handle	2
5-9-03	EP 01-48	机箱门	Door	2
5-9-04	EP 01-35	刷子固定板	Plate	1
5-9-05		刷子	Brush	2
5-9-06	EP 04-1	封面架板	Plate	1
5-9-07	EP 01-20	后面板	Cover	1

